



OWNER'S MANUAL

DRYER



Before beginning installation, read these instructions carefully. This will simplify installation and ensure that the product is installed correctly and safely. Leave these instructions near the product after installation for future reference.

EN ENGLISH

DVH5-08W DVH9-09B DVH-09W



MFL71424355
Rev.03_031320

www.lg.com

Copyright © 2020 LG Electronics Inc. All Rights Reserved.

TABLE OF CONTENTS

This manual may contain images or content that may be different from the model you purchased.
This manual is subject to revision by the manufacturer.

SAFETY INSTRUCTIONS	3
READ ALL INSTRUCTIONS BEFORE USE.....	3
WARNING.....	3
INSTALLATION	9
Parts and Specifications	9
Installation Place Requirements	10
Leveling the Appliance	11
Stacking Instructions.....	13
OPERATION	15
Operation Overview	15
Preparing the Clothes	16
Control Panel.....	18
Programme table.....	20
Option Programmes and Extra Functions	24
SMART FUNCTIONS.....	27
LG ThinQ Application.....	27
Smart Diagnosis.....	29
MAINTENANCE	31
Cleaning after Every Dry	31
Cleaning the Appliance Periodically	33
Care in Cold Climates	36
TROUBLESHOOTING	38
Before Calling for Service	38

SAFETY INSTRUCTIONS

READ ALL INSTRUCTIONS BEFORE USE

The following safety guidelines are intended to prevent unforeseen risks or damage from unsafe or incorrect operation of the appliance. The guidelines are separated into 'WARNING' and 'CAUTION' as described below.

Safety Messages



This symbol is displayed to indicate matters and operations that can cause risks. Read the part with this symbol carefully and follow the instructions in order to avoid risks.



WARNING

This indicates that the failure to follow the instructions can cause serious injury or death.



CAUTION

This indicates that the failure to follow the instructions can cause the minor injury or damage to the appliance.

WARNING



WARNING

To reduce the risk of explosion, fire, death, electric shock, injury or scalding to persons when using this product, follow basic precautions, including the following

Technical Safety

- This appliance is not intended for use by persons (including children) with reduced physical, sensory or mental capabilities, or lack of experience and knowledge, unless they have been given supervision or instruction concerning use of the appliance by a person responsible for their safety.

- Children should be supervised to ensure that they do not play with the appliance.
- Do not dry unwashed items in the appliance.
- Fabric softeners, or similar products, should be used as specified by the fabric softener instructions.
- Remove all objects from pockets such as lighters and matches.
- Never stop the appliance before the end of the drying cycle unless all items are quickly removed and spread out so that the heat is dissipated.
- The appliance is not to be used if industrial chemicals have been used for cleaning.
- Items that have been soiled with substances such as cooking oil, vegetable oil, acetone, alcohol, petroleum, kerosene, spot removers, turpentine, waxes and wax removers should be washed in hot water with an extra amount of detergent before being dried in the appliance.
- Do not drink the condensed water. Failure to do so may result in food-borne illnesses.
- If the supply cord is damaged, it must be replaced by the manufacturer or its service agents or similarly qualified person in order to avoid a hazard.
- The lint filter must be cleaned frequently.
- Lint must not be allowed to accumulate around the appliance.
- Do not spray dry cleaning detergent directly onto the appliance or use the appliance to dry clothes left with dry cleaning detergent.
- Do not dry clothes stained with oil substances. Oil substances (including edible oils) stained on clothes cannot be completely removed even after washing with water.
- The appliance must not be supplied through an external switching device, such as a timer, or connected to a circuit that is regularly switched on and off by a utility.
- Remove clothes from the product immediately when drying is complete or the power is turned off during the drying process. Leaving clothes that has been dried in the appliance unattended

could result in fire. Clothes not removed from the appliance after drying could result in fire. Remove clothes immediately after drying, and then hang or lay the clothes flat to cool.

- Oil-affected items can ignite spontaneously, especially when exposed to heat sources such as in a tumble dryer. The items become warm, causing an oxidation reaction in the oil. Oxidation create heat. If the heat cannot escape, the items can become hot enough to catch fire. Piling, stacking or storing oil-affected items can prevent heat from escaping and so create a fire hazard.
- If it is unavoidable that fabrics that contain vegetable or cooking oil or have been contaminated by hair care products be placed in a tumble dryer they should first be washed in hot water with extra detergent – this will reduce, but not eliminate, the hazard.

Maximum Capacity

The maximum capacity in some cycles for clothes to be dried is:

DVH5-08*	DVH9-09*
8 kg	9 kg

WARNING - To avoid a fire



Do not wash or dry clothes or items that have any contaminants of flammable solvents or substances. Do not clean the product with, or expose it to, flammable substances.

Installation

- Make sure the appliance is properly installed, grounded, and adjusted by qualified service personnel according to the installation instructions.
- Never attempt to operate the appliance if it is damaged, malfunctioning, partially disassembled, or has missing or broken parts, including a damaged cord or plug.

- This appliance should only be transported by two or more people holding the appliance securely.
- Do not install the appliance in a damp and dusty place. Do not install or store the appliance in any outdoor area, or any area that is subject to weathering conditions such as direct sunlight, wind, rain, or temperatures below freezing.
- If the power cord is damaged or the hole of the outlet socket is loose, do not use the power cord and contact an authorized service centre.
- Do not use multiple outlet sockets, an extension power cable or double adapter with this appliance.
- Items such as foam rubber (latex foam), shower caps, waterproof textiles, rubber backed articles and clothes or pillows fitted with foam rubber pads should not be dried in the appliance.
- This appliance must not be installed behind a lockable door, a sliding door or a door with a hinge on the opposite side to that of the appliance, in such a way that a full opening of the appliance door is restricted.
- This appliance must be earthed via the power cord. In the event of malfunction or breakdown, grounding will reduce the risk of electric shock by providing a path of least resistance for electric current.
- This appliance is equipped with a power cord having an equipment-grounding earthing pin and a grounding power plug. The power plug must be plugged into an appropriate outlet socket that is installed and grounded in accordance with all local codes and ordinances.
- Improper connection of the equipment-grounding conductor can result in risk of electric shock. Check with a qualified electrician or service personnel if you are in doubt as to whether the appliance is properly grounded.
- Do not modify the power plug provided with the appliance. If it does not fit the outlet, have a proper outlet installed by a qualified electrician.
- This appliance must not be stored or used in any outdoor location.

Operation

- Do not attempt to separate any panels or disassemble the appliance. Do not apply any sharp objects to the control panel in order to operate the appliance.
- Do not repair or replace any part of the appliance. All repairs and servicing must be performed by qualified service personnel unless specifically recommended in this Owner's Manual. Use only authorized factory parts.
- Keep the area underneath and around the appliance free of combustible materials such as lint, paper, rags, chemicals, etc.
- Do not put animals, such as pets into the appliance.
- Do not leave the appliance door open. Children may hang on the door or crawl inside the appliance, causing damage or injury.
- Never reach into the appliance while it is operating. Wait until the drum has completely stopped.
- Do not put in, wash or dry articles that have been cleaned in, washed in, soaked in, or spotted with combustible or explosive substances (such as wax, oil, paint, gasoline, degreasers, drycleaning solvents, kerosene, vegetable oil, cooking oil, etc.). Improper use can cause fire or explosion.
- In case of flood, disconnect the power plug and contact the LG Electronics customer information centre.
- Do not push down on the door, when the appliance door is open.
- Do not touch the door during a high temperature programme.
- Do not use flammable gas and combustible substances (benzene, gasoline, thinner, petroleum, alcohol, etc.) near the appliance.
- If the drain hose or inlet hose is frozen during winter, use it only after thawing.
- Keep all washing detergents, softener and bleach away from children.
- Do not touch the power plug or the appliance controls with wet hands.
- Do not bend the power cable excessively or place a heavy object on it.

Maintenance

- Securely plug the power plug into the mains outlet socket after completely removing any moisture and dust from the pins.
- Disconnect the appliance from the power supply before cleaning the appliance. Setting the controls to the OFF or stand by position does not disconnect this appliance from the power supply.
- Never unplug the appliance by pulling on the power cable. Always grip the power plug firmly and pull straight out from the outlet socket.
- Do not spray water inside or outside the appliance to clean it.

Disposal

- Before discarding an old appliance, unplug it. Cut off the cable directly behind the appliance to prevent misuse.
- Dispose of all packaging materials (such as plastic bags and styrofoam) away from children. The packaging materials can cause suffocation.
- Remove the door before disposing of or discarding this appliance to avoid the danger of children or small animals getting trapped inside.

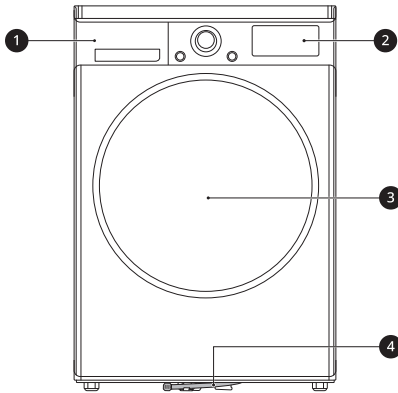
INSTALLATION

Parts and Specifications

NOTE

- Appearance and specifications may vary without notice to improve the quality of the appliance.

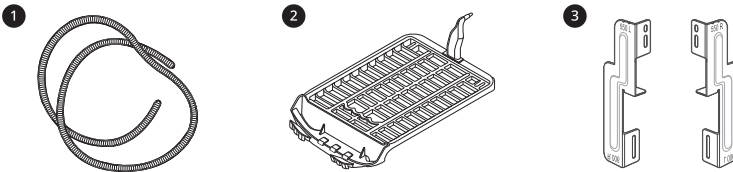
Front View



- ❶ Water collection tank
- ❷ Control panel
- ❸ Door
- ❹ Drain Tube

Available Accessories

Please contact LG Electronics Customer Information Centre or visit the LG Website at <http://www.lg.com> for purchase.



- ❶ Condensing Drain Hose and Hose Holder
- ❷ Dry Rack
- ❸ Stacking Kit

NOTE

- The included accessories vary depending on the model you purchased.

Specifications

Asterisk(s) means model variant and can be varied (0-9) or (A-Z).

Model	DVH5-08* / DVH9-09*
Power supply	220 - 240 V~, 50 Hz
Dimension (Width X Depth X Height)	600 mm X 690 mm X 850 mm
Product weight	56 kg
Allowable temperature	5 - 35 °C

Installation Place Requirements

Before installing the appliance, check the following information to make sure that the appliance should be installed in a correct place.

Installation Location

⚠ WARNING

- Do not install the appliance around a heat source. The rear side of the appliance must be well ventilated. Failure to follow these instructions may result in problems.
- The appliance is not designed for maritime use or for use in mobile installation such as caravans, aircraft and etc.
- Do not install the appliance as a built-in appliance. It is not suitable for built-in purpose.

NOTE

- For better drying performance, keep the rear of the appliance away from the wall.
- Make sure that the location where the appliance will be installed meets a minimum clearance conditions.
- Install the appliance on a flat hard floor. Allowable slope under the appliance is 1 degree.
- Never try to correct any unevenness in the floor with pieces of wood, cardboard or similar materials under the appliance.

- Install the appliance in a location where service engineers are easily accessible in the event of a breakdown.
- Do not install the appliance next to high-temperature appliances such as refrigerator, oven or stove, and etc. It can cause poor drying performance and delay programme duration. It also adversely affect the proper functioning of the compressor.
- Do not install the appliance where there is a risk of frost or dust. The appliance may not be able to operate properly or may be damaged by freezing of condensed water in the pump and drain hose.
- With the appliance installed, adjust all four feet using a spanner to ensure the appliance is stable, and a clearance of approximately 20 mm is left between the top of the appliance and the underside of any work-top.

Ventilation

- Alcove or under counter
 - Ensure airflow of 3.17 m³/mm through the appliance.
- Cupboard
 - Cupboard door must have 2 (louvered) opening, each have a minimum area of 387 cm², located 8 cm from bottom and top of the door.

NOTE

- Make sure that air circulation around the appliance is not impeded by carpets, rugs, and etc.

Ambient Temperature

- Do not install the appliance in rooms where freezing temperatures may occur. Frozen hoses may burst under pressure. The reliability of the electronic control unit may be impaired at temperatures below freezing point.

NOTE

- If the appliance is delivered in winter and temperatures are below freezing, place the appliance at room temperature for a few hours before putting it into operation.
- The appliance performs best at a room temperature of 23 °C.

Electrical Connection

- Do not use an extension cord or double adapter.
- Do not overload the outlet with more than one appliance.
- Connect the appliance to an earthed socket in accordance with current wiring regulations.
- The appliance must be positioned a place close to outlet socket so that the plug is easily accessible.
- Outlet socket must be within 1.5 meters of either side of the location of the appliance.

NOTE

- Always unplug the appliance after use.

Leveling the Appliance**Checking Leveling**

Leveling the appliance prevents unnecessary noise and vibration. Check whether the appliance is perfectly level after installation.

- If the appliance rocks when pushing the top plate of the appliance diagonally, adjust the feet again.

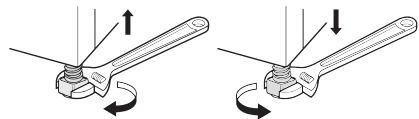
NOTE

- Timber or suspended type flooring may contribute to excessive vibration and unbalance. Re enforcement or bracing of the timber floor may need to be considered to stop or reduce excessive noise and vibration.
- Do not install the appliance on any elevated surface, stand or plinth as it can become unstable and fall causing serious injury and damage.

Adjusting and Leveling the Appliance

When the appliance is not perfectly level, turn the adjustable feet until the appliance no longer wobbles.

- Turn the adjustable feet clockwise to raise or turn the adjustable feet counterclockwise to lower from front-to-back, side-to-side and corner-to-corner.

**Reversing the door**

You can reverse the door for your convenience.

⚠ WARNING

- Do not reverse the door while the appliance is stacked on a washing machine.

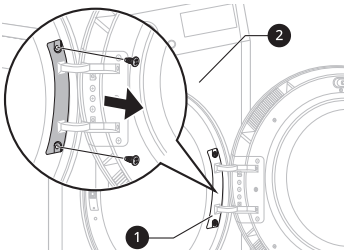
⚠ WARNING

- Before removing the hinge screws, have an assistant support the weight of the door. The door could fall on the floor due to the weight of the door.
- For safety reasons, two or more people need to work together to reverse the door.

NOTE

- The appearance of the screws varies and the screws must be inserted differently depending on the position. Make sure the screw is properly selected before tightening.

- 1** Open the door and remove 2 screws on the door hinge **1**. After removing the screws, put the door down carefully from the cabinet **2** with the front side facing down to the floor.

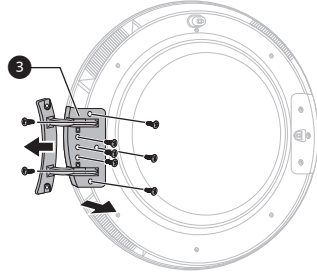


⚠ WARNING

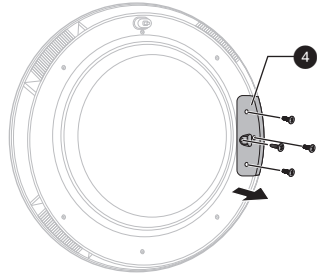
- Remove the lower screw first. The door may fall on to the floor due to its weight and the door can be damaged.

- 2** Remove 8 screws on the hinge assembly **3** from the door.

- There are 6 screws on the front and 2 screws on the side.

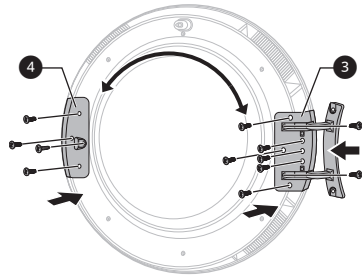


- 3** Remove the 3 screws from the door latch assembly **4** which is fixed between the door and the hinge assembly, and then remove the screw which is fixed on the door hook.

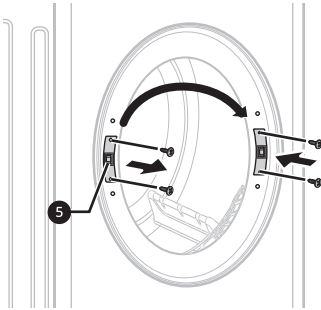


- 4** Swap the position of the hinge assembly **3** and the door latch assembly **4** and then tighten the screws in reverse order.

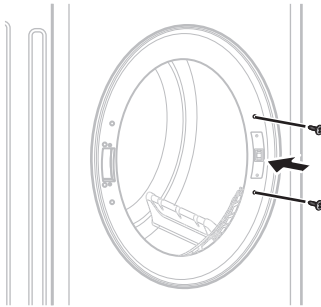
- Tighten the screw in their proper position referring from steps 2 to 4.



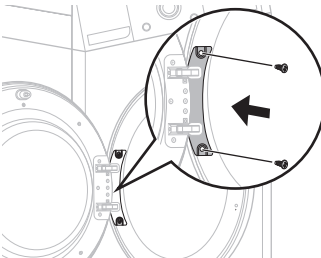
- 5** Remove the door catch **5** from the appliance frame by removing 2 screws and then assemble them on the opposite side.



- 6** Remove the 2 decorative screws from the appliance frame and then assemble them on opposite side.



- 7** Install the door with the screws removed in step 1 and then check the door closes properly.



qualified service personnel to ensure it has been installed correctly.

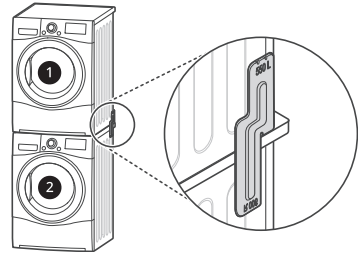
The qualified personnel will ensure you have the correct stacking kit for your model of LG front load washing machine and will ensure it is firmly fixed. For these reasons, expert fitting is essential.

NOTE

- Some models are not sold with all of the available accessories, you may need to purchase the LG stacking kit first if it was not provided with your model. Please contact LG Electronics Customer Information Centre or visit the LG Website at <http://www.lg.com> for purchase.

Stacking Kit

In order to stack the appliance, an LG stacking kit is required.



- 1** Dryer
- 2** LG Front Load Washing Machine

The appliance may only be stacked on top of an LG front load washing machine. Do not attempt to stack the appliance on any other washing machine, as it could result in damage, injury or property damage.

Shape and assembly direction	Washing Machine Top plate size	
	550 mm	600 mm

Stacking Instructions

The appliance can be placed on top of an LG front load washing machine and securely fixed with a stacking kit. This installation must be conducted by

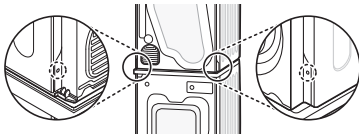
Installation Procedure

⚠ WARNING

- For safety reasons, installation procedure should be performed by two or more qualified service personnel.
- The weight of the appliance and the height of the installation makes the installation procedure too risky for one person.
- Incorrect installation can cause serious accidents.
- Do not operate if the appliance is not properly stacked.

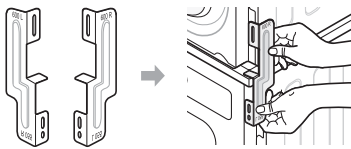
1 Place the appliance on the top of an LG front load washing machine.

2 Remove the 2 screws from the bottom of the rear cover on each side.

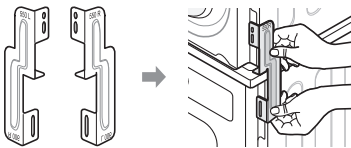


3 Align the LG stacking kit holes and the rear cover holes in a line.

- In case of the top plate size is 600 mm



- In case of the top plate size is 550 mm



4 Fasten the 2 screws that were removed earlier from the appliance to the stacking kit.

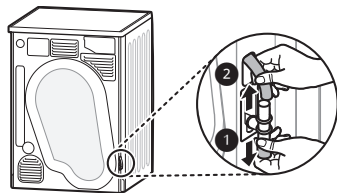
5 Use the 4 screws in the accessory box (16 mm) to assemble the washing machine rear cover and stacking kit.

6 The procedure for the opposite side will be the same.

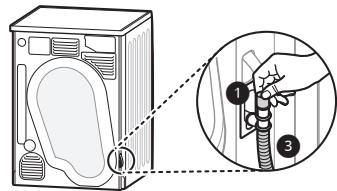
Installing the Optional Drain Hose

Normally, condensed water is pumped up to the water collection tank where water is collected until manually emptied. Water can also be drained out directly to a mains drain, especially when the appliance is stacked on top of a washing machine. With the connecting elbow or T piece of the mains drain hose, simply change the water path and re-route to the drainage facility as below:

1 Separate the anti-backflow lid **1** and the water collection tank hose **2** from the connecting elbow or T piece.



2 Attach the anti-backflow lid **1** to the head of the connecting elbow or T piece and then connect the optional drain hose **3** to the opposite side of the connecting elbow or T piece.



⚠ CAUTION

- If the optional drain hose is installed in a way that leaves it bent or pinched, drainage may not function properly.

OPERATION

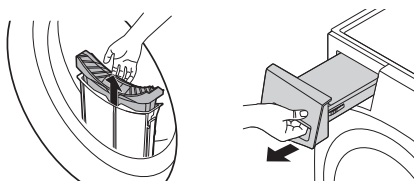
Operation Overview

Using the Appliance

Before the first cycle, set the appliance to dry for 5 minutes to warm up the drum. Open the door between loads the first few times you use the appliance to allow any odours from the interior of the appliance to disperse.

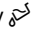
Children must be supervised so that they do not climb inside the drum.

- 1 Ensure the lint filter and water collection tank are clean.



- Open the door and ensure the lint filter is clean. When the filter is full with lint, drying times will be longer than usual.
- Pull out the water collection tank and empty the condensed water. When the water collection tank is full, the appliance may stop during the cycle.

NOTE

- In some instance, LED window may display  icon to inform you that the water collection tank is full. If this occurs, empty the water collection tank.

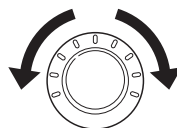
- 2 Place the clothes into the drum after sorting and close the door.
 - Push the clothes deep into the drum so that the clothes keeps away from the door seal. When the clothes get stuck between the door and seal, they may get damaged while drying.
 - The clothes should be sorted by fabric types and dryness level.

- All strings and attached belts of clothes should be well tied and fixed before being put into the drum.

- 3 Press the **Power** button to turn the appliance on.
 - Depending on the models, the **Power** button may light up to indicate that the appliance is ready for dry.



- 4 Choose a drying programme by turning the programme selector knob.
 - If you press the **Start/Pause** button without choosing a programme, the appliance will proceed with the **Cotton** programme. Please refer to the programme table for the detailed information.



- 5 Press the **Start/Pause** button to start the drying programme.



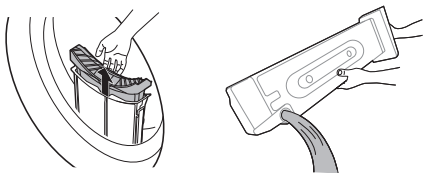
- 6 After the drying programme has finished, open the door and unload the clothes.

⚠ CAUTION

- Be careful! The drum inside may still be hot.

7 Press the **Power** button to turn the appliance off.

8 Clean the lint filter and empty the water collection tank.



9 To help reduce odours from forming, the dryer's door can be left open or slightly ajar for a short period of time if possible to help ventilate the drum after use.

⚠ WARNING

- For safety reasons, do not allow children or animals to enter the appliance. It may cause damage or injury.

NOTE

- The final part of a tumble dry cycle occurs without heat (cool down cycle) to ensure that the clothes are left at a temperature that ensures the clothes will not be damaged.
- A high atmospheric temperature and a small room may both increase drying time as well as energy consumption.

Preparing the Clothes**NOTE**

- Do not overload the appliance for the best drying performance and most efficient energy usage.

Checking the clothes before loading**⚠ CAUTION**

- Check that the clothes are not stuck between appliance and door, otherwise the clothes may get damaged while drying.
- Observe the maximum load capacity on the programme table for the relevant drying programme to get optimum drying results. Overloading gives a poor drying result and causes unnecessary creasing.
- Do not load soaking wet clothes into the appliance. It will cause an increasing of drying time and energy consumption. Make sure that the clothes are spun thoroughly before loading.
- A mixed fabric load can cause the drying time to be extended and the time remaining in the display to pause during active drying. The remaining time will then continue when it is the actual time that remains.
- Make sure to empty all pockets. Items such as nails, hair clips, matches, pens, coins and keys can damage both your appliance and clothes.
- Remove loose belts and close zippers, hooks and strings to make sure that these items do not snag other clothes.

Sorting the Clothes

Clothes have their own fabric care labels, so drying according to the fabric care label is recommended. Sort the clothes into size and type of fabric and then prepare the clothes according to the symbols on the fabric care labels.

Woollens

- Dry woollens on the **Wool** programme. Be sure to follow fabric care label symbols first. Wool may not be completely dried from the cycle, so do not repeat drying. Pull woollens to their original shape and dry them flat.

Woven and Loopknit Materials

- Some woven and loopknit materials may shrink, depending on quality.

Non-Iron and Synthetics

- Do not overload the appliance. Take out non-Iron items as soon as the appliance stops to reduce creases.

Baby Clothes and Night Gowns







- Always check fabric care labels.

Rubber and Plastics

- Do not dry any items made from or containing rubber or plastics such as:
 - Aprons, Bibs and Chair Covers
 - Curtains and Table Cloths
 - Bathmats









Fiberglass

- Do not dry fiberglass items in the appliance. Glass particles left in the appliance may be subsequently picked up by your clothes in later cycles.

Symbol	Description
	Low Heating
	No Heating / Air
	Line Dry / Hang to dry
	Drip Dry
	Dry Flat
	In the Shade

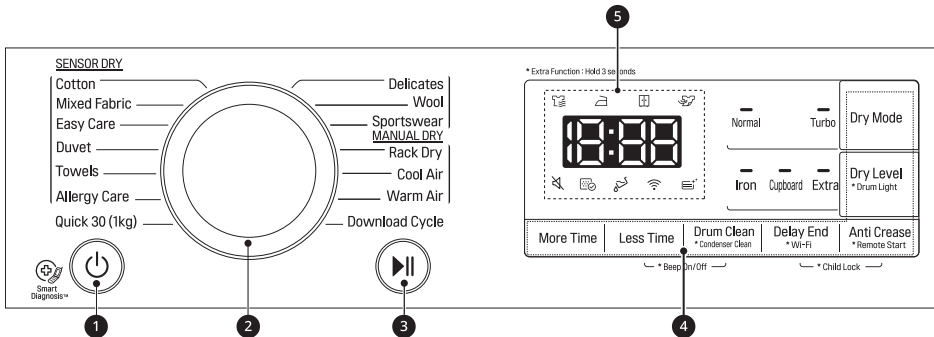
Checking the Fabric Care Label

The symbols on the fabric care label tell you about the fabric content of your clothes and how it should be dried.

Symbol	Description
	Dry
	Tumble Dry
	Permanent Press / Crease Resistant
	Gentle / Delicate
	Do not Tumble Dry
	Do not Dry
	High Heating
	Medium Heating

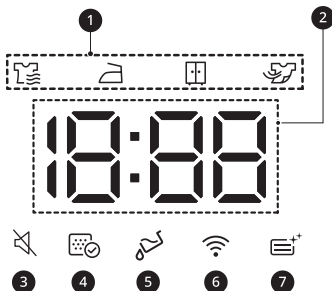
Control Panel

Control Panel Features



	Description
1	<p>Power On/Off button</p> <ul style="list-style-type: none"> Press the Power button to turn power on and off. Press the Power button to cancel the Delay End function.
2	<p>Programme Selector</p> <ul style="list-style-type: none"> Programmes are available according to the clothing type. The lamp will light up to indicate the selected programme.
3	<p>Start/Pause Button</p> <ul style="list-style-type: none"> This Start/Pause button is used to start or pause a dry cycle. When in Pause, the power is turned off automatically after 14 minutes for safety reasons.
4	<p>Extra Options and Functions / Additional Programme Buttons</p> <ul style="list-style-type: none"> Use these buttons to select the desired options for the selected programme. Not all options are available in each programme. <p>Remote Start</p> <ul style="list-style-type: none"> With the LG ThinQ app, you can use a smartphone to control your appliance remotely. In order to use the Remote Start function, refer to SMART FUNCTIONS. <p>Wi-Fi</p> <ul style="list-style-type: none"> Press and hold Delay End button for 3 seconds to initiate the connection of the appliance to the LG ThinQ application.
5	<p>Time and Status Display</p> <ul style="list-style-type: none"> The display shows the settings, estimated remaining time, options, and status messages. When the appliance is turned on, the default settings in the display will illuminate.

Time and Status Display



	Description
①	<p>Drying progress indicator</p> <ul style="list-style-type: none"> 🔊 lights up when the appliance is in drying progress. 🧺 lights up when the appliance is in iron drying progress. 📦 lights up when the appliance is in cupboard drying progress. 👉 lights up when the appliance is in cooling progress.
②	<p>Time Remaining Display</p> <ul style="list-style-type: none"> When a drying programme is selected, drying time for the selected programme is displayed. This time will change when you set the extra options for the programme. Error messages will appear when the appliance diagnose problems.
③	🔊 lights up when the Beeper function is turned off.
④	<p>🧺 lights up when the lint filter should be cleaned or is inserted.</p> <ul style="list-style-type: none"> Cleaning notice: When you press the Power button, the icon will become displayed. Missing notice: When the lint filter is not inserted, the icon will become displayed and the appliance will not operate.
⑤	<p>👉 lights up when the water collection tank needs to be emptied or is full.</p> <ul style="list-style-type: none"> Emptying notice: When you press the Power button, this icon will become displayed. Full water notice: The icon will become displayed and a chime will sound while the appliance is in operation.
⑥	📶 lights up when the appliance is connected to Wi-Fi network at home.
⑦	📄 lights up while the condenser is being washed.

Programme table

Sensor Drying Programme Guide

Programme	Cotton	Max. Load Capacity*1	8 kg 9 kg
Dry Level <ul style="list-style-type: none"> • Clothing Type • Detail 	Extra <ul style="list-style-type: none"> • Towels, dressing gowns and bed linen • For thick and quilted fabrics 		
	Cupboard <ul style="list-style-type: none"> • Bath towels, tea towels, underwear and cotton socks • For fabrics that do not need to be ironed 		
	Iron <ul style="list-style-type: none"> • Bed linen, table linen, towels, T-shirts, polo shirts and work clothes • For fabrics that need to be ironed 		
Note for test institutes	<ul style="list-style-type: none"> • Set program Cotton + Normal + Cupboard option for test in accordance or in conformity with AS/NZS 2442.1. • The test results depend on room temperature, type and amount of load, water hardness. 		

*1: The maximum load capacity may vary depending the model you purchased.

Programme	Mixed Fabric	Max. Load Capacity	4 kg
Dry Level <ul style="list-style-type: none"> • Clothing Type • Detail 	Extra <ul style="list-style-type: none"> • Bed linen, table linen, tracksuits, anoraks and blankets • For thick and quilted fabrics that do not need to be ironed 		
	Cupboard <ul style="list-style-type: none"> • Shirts and blouses • For fabrics that do not need to be ironed 		
	Iron <ul style="list-style-type: none"> • Trousers, dressers, skirts and blouses • For fabrics that need to be ironed 		

Programme	Easy Care	Max. Load Capacity	3.5 kg
Dry Level <ul style="list-style-type: none"> • Clothing Type • Detail 	Cupboard <ul style="list-style-type: none"> • Shirts, T-shirts, trousers, under-wear and socks • For polyamide, acrylic, and polyester that do not need to be ironed 		
	Iron <ul style="list-style-type: none"> • Shirts, T-shirts, under-wear, anoraks and socks • For polyamide, acrylic, polyester that do need to be ironed 		

Programme	Duvet	Max. Load Capacity	2.5 kg
Clothing Type	Beddings, bed sheets		
Detail	For bulky items <ul style="list-style-type: none"> • Large bed sheets or quilt covers may not dry evenly due to uneven airflow should they become rolled up. They may require removal and reloading mid cycle to ensure proper drying. 		

Programme	Towels	Max. Load Capacity	2.5 kg
Clothing Type	Towels, Pillowcases		
Detail	For cotton fabrics which do not need to be ironed.		

Programme	Allergy Care	Max. Load Capacity	1 kg
Clothing Type	Cotton, underwear, bed sheets and baby clothes		
Detail	Helps to remove allergens such as house mites		

Programme	Delicates	Max. Load Capacity	1.5 kg
Clothing Type	Silk, fine fabrics and lingerie		
Detail	For fabrics that are heat-sensitive, such as synthetic fabrics		

Programme	Wool	Max. Load Capacity	1 kg
Clothing Type	Wool		
Detail	For wool fabrics that are suitable for tumble drying		

Programme	Sportswear	Max. Load Capacity	2 kg
Clothing Type	Soccer kit and training wear		
Detail	For polyester material		

Manual Drying Programme Guide

Programme	Rack Dry	Max. Load Capacity	-
Clothing Type	Silk, wool, delicate lingerie		
Detail	Refreshes clothes without tumble drying		

Programme	Cool Air	Max. Load Capacity	-
Clothing Type	All fabrics that need refreshing		
Detail	Tumbles without heat		

Programme	Warm Air	Max. Load Capacity	-
Clothing Type	Bath towels, bath robes, dishcloths and acrylic quilted fabrics		
Detail	Small Items and damp clothing, Everyday items suitable for heat drying		

Special Drying Programme Guide

Programme	Quick 30 (1kg)	Max. Load Capacity	1 kg
Clothing Type	Light and small clothes less than 3 items		
Detail	For small amount of polyamide, acrylic and polyester items.		

Programme	Download Cycle	Max. Load Capacity	-
Detail	This programme allows you to download a new and special drying programme to your appliance with a smartphone.		

CAUTION

- If the load is less than 1 kg, please use the **Warm Air** programme or the Manual Drying programme (**More Time / Less Time**). Wool items should be dried using the **Wool** programme and heat-sensitive fabrics including silk, underwear and lingerie should be dried using the **Delicates** programme. Please comply with the recommended clothing load when you select your desired programme. Otherwise, your clothes may be damaged and the drying results will be poor.

NOTE

- If the appliance is installed as built under, it may cause performance degradation.
- If the clothes are not spun at a high speed during washing, energy consumption and drying times will increase. Large Bed sheets or quilt covers may not dry evenly due to uneven airflow should they become rolled up. They may require removal and reloading mid cycle to ensure proper drying.

Selectable Drying Options

Programme		Dry Mode		
Programme	Dry Level	Off	Normal	Turbo
Cotton	Extra		●	●
	Cupboard		●	●
	Iron		●	●
Mixed Fabric	Extra		●	●
	Cupboard		●	●
	Iron		●	●
Easy Care	Cupboard		●	●
	Iron		●	●
Duvet	-			●
Towels	-			●
Allergy Care	-			●
Delicates	-		●	
Wool	-		●	
Sportswear	-		●	
Rack Dry	-		●	
Cool Air	-	●		
Warm Air	-		●	●
Quick 30 (1kg)	-			●

Option Programmes and Extra Functions

Delay End

It allows you to delay the finishing time of the drying cycle from 3 hours to 19 hours.

- 1 Turn the appliance on.
- 2 Select a programme.
- 3 Press the **Delay End** button.
- 4 Set time delay hour(s) by pressing the **More Time, Less Time** button.
- 5 Press the **Start/Pause** button.

Anti Crease

It allows you to reduce creases that are formed when the clothes are not unloaded promptly at the end of drying cycle.

When the option is turned on, a lamp indicated that the anti crease option is set, lights up and the appliance repeatedly runs for 10 seconds and pauses for 5 minutes. The option is turned off automatically after 2 hours at the end of drying cycle.

To turn off the option, press the **Anti Crease** button before you start a drying cycle.

NOTE

- When the option is set, a rectangle with a dashed line and **End** appears on the display until the feature is off.
- When the option is set, only the **Power** button works after the drying cycle is end.
- When a drying cycle is running, pause the cycle first to set the option.
- Always turn off the appliance before unloading the clothes.

Dry Level

It allows you to select a dryness level for the drying programme.

- 1 Turn the appliance on.
- 2 Select a programme.
- 3 Select a dryness level by pressing the **Dry Level** button repeatedly.

Beep On/Off

It allows you to turn the chime sound on and off. Press the **Beep On/Off** button.

- The LED lights up when the option is turned on.

Drum Light

While the appliance is running, it is possible to see inside the drum when you turn the function on.

To turn the function on or off, press and hold the **Dry Level** button for 3 seconds.

- **Light on:** Door is opened.
- **Light off:** Door is closed.

NOTE

- The light is turned off automatically after 4 minutes.
- Depending on the doors finish, you may not be able to see inside the drum.

More Time / Less Time

It allows you to increase or decrease drying time when you use manual drying programmes such as **Rack Dry, Cool Air** and **Warm Air**.

- Press the **More Time** button to increase the selected programme time by 5 minutes.
- Press the **Less Time** button to decrease the selected programme time by 5 minutes.

Child Lock

It allows you to control the locking and unlocking of control panel. It prevents children from changing cycles or operating the appliance.

Locking the Control Panel

- 1 Press and hold the **Delay End** and **Anti Crease** button simultaneously for 3 seconds.
- 2 A chime will sound, and **CL** will appear on the display.
 - When the function is activated, all buttons are locked except for the **Power** button.

NOTE

- Turning off the power or completing all cycles will not reset the child lock function. You must deactivate child lock before you can access any other functions.

Unlocking the Control Panel

Press and hold the **Delay End** and **Anti Crease** button simultaneously for 3 seconds.

- A chime will sound and the remaining time for the current programme will reappear on the display.

Rack Dry

This programme is designed for use with clothes that must be dried flat, without tumbling, including sweaters and delicate fabrics.

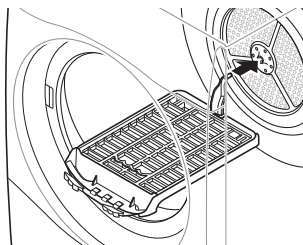
To use the programme, you need a dryer rack that is placed inside the appliance. Before drying, discard packing materials of the dryer rack.

NOTE

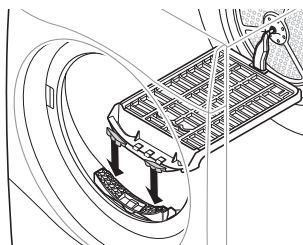
- Some models are not sold with all of the available accessories, you may need to purchase the dryer rack first if it was not provided with your model. Please contact LG Electronics Customer Information Centre or visit the LG Website at <http://www.lg.com> for purchase.

- 1 Open the door.

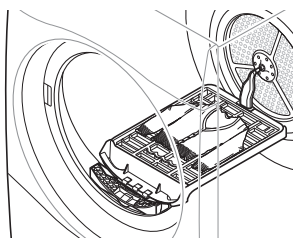
- 2 Insert the hook of dryer rack to the drum centre.



- 3 Place the dryer rack on the structure above the lint filter and press it to complete assembly.



- 4 Place wet items on top of the rack. Allow space around items for air to circulate.
 - The dryer rack does not move, but the drum will rotate.



- 5 Close the door.
- 6 Turn power on and select **Rack Dry**.
- 7 Press the **Start/Pause** button.

NOTE

- Check the lint filter and remove any lint accumulated from items dried on the rack.

NOTE

- The **More Time / Less Time** keys can be used to finely adjust the drying time.
-

SMART FUNCTIONS

LG ThinQ Application

The **LG ThinQ** application allows you to communicate with the appliance using a smartphone.

LG ThinQ Application Features

Communicate with the appliance from a smartphone using the convenient smart features.

Smart Pairing

This function automatically selects the best cycle and settings for the dryer based on usage information about the most recently completed wash cycle.

NOTE

- To use this function, both washer and dryer must be connected to **LG ThinQ** application.
- If you enable this function in the **LG ThinQ** application and turn on the dryer after using the washer, a recommended dryer cycle is automatically set.

Smart Diagnosis

This function provides useful information for diagnosing and solving issues with the appliance based on the pattern of use.

Push Alert

When the cycle is complete or the appliance has problems, you have the option of receiving push notifications on a smartphone. The notifications are triggered even if the **LG ThinQ** application is off.

Energy Monitoring

This function checks the energy consumption of the recently used cycles and monthly average.

Settings

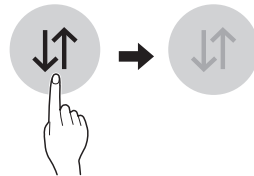
Allows you to set various options on the appliance and in the application.

NOTE

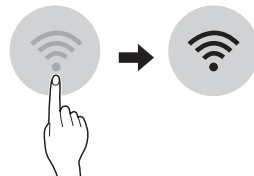
- If you change your wireless router, Internet service provider, or password, delete the registered appliance from the **LG ThinQ** application and register it again.
- The application is subject to change for appliance improvement purposes without notice to users.
- Functions may vary by model.

Before Using LG ThinQ Application


- 1 Check the distance between the appliance and the wireless router (Wi-Fi network).
 - If the distance between the appliance and the wireless router is too far, the signal strength becomes weak. It may take a long time to register or installation may fail.
- 2 Turn off the **Mobile data** or **Cellular Data** on your smartphone.



- 3 Connect your smartphone to the wireless router.



NOTE

- To verify the Wi-Fi connection, check that  icon on the control panel is lit.
- The appliance supports 2.4 GHz Wi-Fi networks only. To check your network frequency, contact your Internet service provider or refer to your wireless router manual.
- **LG ThinQ** is not responsible for any network connection problems or any faults, malfunctions, or errors caused by network connection.
- If the appliance is having trouble connecting to the Wi-Fi network, it may be too far from the router. Purchase a Wi-Fi repeater (range extender) to improve the Wi-Fi signal strength.
- The Wi-Fi connection may not connect or may be interrupted because of the home network environment.
- The network connection may not work properly depending on the Internet service provider.
- The surrounding wireless environment can make the wireless network service run slowly.
- The appliance cannot be registered due to problems with the wireless signal transmission. Unplug the appliance and wait about a minute before trying again.
- If the firewall on your wireless router is enabled, disable the firewall or add an exception to it.
- The wireless network name (SSID) should be a combination of English letters and numbers. (Do not use special characters.)
- Smartphone user interface (UI) may vary depending on the mobile operating system (OS) and the manufacturer.
- If the security protocol of the router is set to **WEP**, you may fail to set up the network. Please change it to other security protocols (**WPA2** is recommended) and register the product again.

Installing the LG ThinQ Application

Search for the **LG ThinQ** application from the Google Play Store or Apple App Store on a

smartphone. Follow instructions to download and install the application.

Using the Appliance Remotely

Remote Start

Use a smartphone to control your appliance remotely. You can also monitor your cycle operation so you know how much time is left in the cycle.

Using this function

- 1 Press the **Power** button.
- 2 Load the clothes into the drum.
- 3 Press and hold the **Anti Crease** button for 3 seconds to enable the remote control function.
- 4 Start a cycle from the **LG ThinQ** application on your smartphone.

NOTE

- Once this function is enabled, you can only start a cycle from the **LG ThinQ** smartphone application. If the cycle is not started, the appliance will wait to start the cycle until it is turned off remotely from the application or this function is disabled.
- If the door has been opened, you can not start a cycle remotely.

Disable this function manually

When the function is activated, press and hold the **Anti Crease** button for 3 seconds.

Download Cycle

Download new and special cycles that are not included in the basic cycles on the appliance.

Appliances that have been successfully registered can download a variety of specialty cycles specific to the appliance.

Once cycle download is completed in the appliance, the appliance keeps the downloaded cycle until a new cycle is downloaded.

NOTE

- Only one downloaded cycle can be stored on the appliance at a time.

RF Radiation Exposure Statement

This equipment shall be installed and used at a minimum distance of 20 cm from the human body.



Open Source Software Notice Information

To obtain the source code under GPL, LGPL, MPL, and other open source licenses, that is contained in this product, please visit <http://opensource.lge.com>.

In addition to the source code, all referred license terms, warranty disclaimers and copyright notices are available for download.

LG Electronics will also provide open source code to you on CD-ROM for a charge covering the cost of performing such distribution (such as the cost of media, shipping, and handling) upon email request to opensource@lge.com. This offer is valid for a period of three years after our last shipment of this product. This offer is valid to anyone in receipt of this information.

Smart Diagnosis

This feature is only available on models with the  or  logo.

Use this feature to help you diagnose and solve problems with your appliance.

NOTE

- For reasons not attributable to LGE's negligence, the service may not operate due to external factors such as, but not limited to, Wi-Fi unavailability, Wi-Fi disconnection, local app store policy, or app unavailability.

- The feature may be subject to change without prior notice and may have a different form depending on where you are located.

Using LG ThinQ to Diagnose Issues



If you experience a problem with your Wi-Fi equipped appliance, it can transmit troubleshooting data to a smartphone using the **LG ThinQ** application.

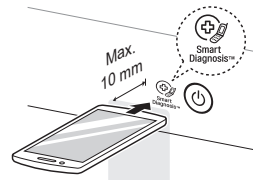
- Launch the **LG ThinQ** application and select the **Smart Diagnosis** feature in the menu. Follow the instructions provided in the **LG ThinQ** application.

Using Audible Diagnosis to Diagnose Issues

Follow the instructions below to use the audible diagnosis method.

- Launch the **LG ThinQ** application and select the **Smart Diagnosis** feature in the menu. Follow the instructions for audible diagnosis provided in the **LG ThinQ** application.

- 1 Press the **Power** button to turn on the appliance.
 - Do not press any other buttons or turn the programme selector knob.
- 2 Place the mouthpiece of your smartphone close to the  or  logo.



- 3 Press and hold the **More Time** button for 3 seconds or longer while holding the smartphone mouthpiece to the logo until the data transfer is complete.

- Keep the smartphone in place until the data transfer has finished. Time remaining for data transfer is displayed.

4 After the data transfer is complete, the diagnosis will be displayed in the application.

NOTE

- For best results, do not move the smartphone while the tones are being transmitted.
-

MAINTENANCE

⚠ WARNING

- Remove the power plug when you clean the appliance. Not removing the plug may result in electric shock.

Cleaning after Every Dry

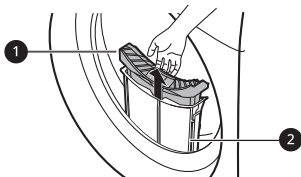
Cleaning the Lint Filter

⚠ CAUTION

- Clean the lint filter in the proper way by referring to the following instructions. Failure to do so can cause lint build up on the condenser that can affect the drying performance.

NOTE

- Cleaning the lint filter will reduce drying time, energy consumption and prevent unnecessary malfunctions.
- Unload all of the clothes from the appliance before pulling out the lint filter.
- After cleaning the 2 piece lint filter, insert it back into place. If the lint filter is not in the appliance, you can not operate the appliance.



1 Inner Filter

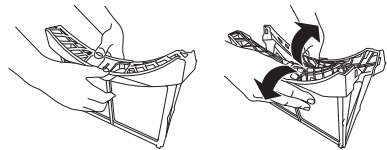
- Always clean the inner filter before and after use.

2 Outer Filter

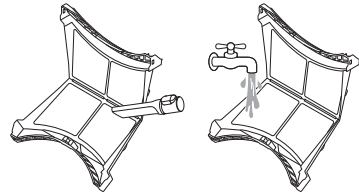
- Clean the outer filter after drying 10 times or when the lint has accumulated onto the outer filter.

Clean the inner filter

- Pull out the inner filter from the outer filter and then open the inner filter.
 - Open the filter by unfolding it in the direction of the arrow.



- Clean a large cluster of lint first, then clean the residual lint using vacuum cleaner or washing under running water.



- Dry the filter completely if the filter is moist. Failure to do so, odour may occur in the appliance.
- DO NOT tap the filter repeatedly as the built in magnet may dislodge and cause a malfunction.

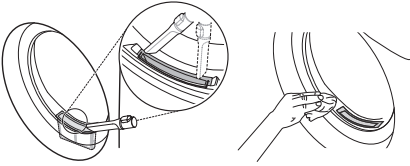
- After drying the inner filter completely, close the filter by pushing down its center.

- Ensure the left and right side of the inner filter is closed properly.

- Insert the inner filter into the outer filter.

Clean the outer filter

- 1 Remove the dust or lint around the filter inlet.



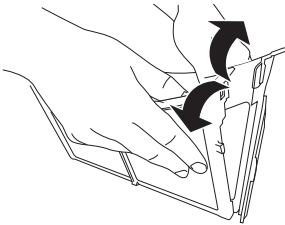
⚠ CAUTION

- When the lint drops into the filter inlet, it may cause degradation of drying performance and increase in drying time.

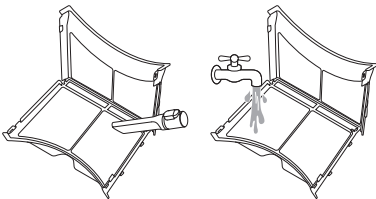
- 2 Pull out the outer filter.

- 3 Remove the inner filter.

- 4 Open the outer filter by unfolding in the direction of the arrow grasping the top edge of the outer filter.



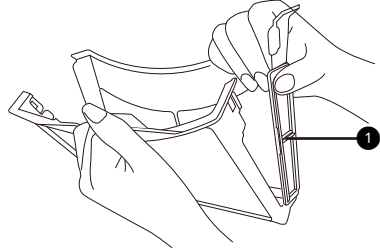
- 5 Clean the residual lint using vacuum cleaner or washing under running water.



- Dry the filter completely if the filter is moist. Failure to do so, odour may occur in the appliance.

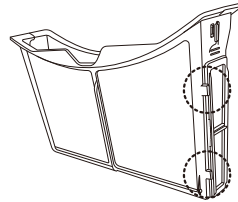
- DO NOT tap the filter repeatedly as the built in magnet may dislodge and cause a malfunction.

- 6 Close the outer filter while pushing the side ① of the filter.

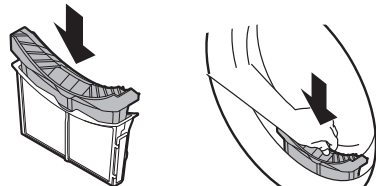


NOTE

- Ensure the side of the filter is closed properly. Failure to do so, any lint accumulated on the filter may get into the appliance and may cause degradation of the drying performance.



- 7 Close them, and reinsert the both lint filters.



⚠ CAUTION


- Do not load or remove any clothes when the lint filter is not in a place. The clothes can drop into the the filter inlet and it may cause the appliance to malfunction.

Emptying the Water Collection Tank

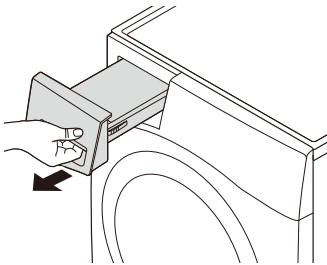
Condensed water is collected in the water collection tank.

Empty the water collection tank after every use. Not doing so will affect the drying performance and can cause an operational error.

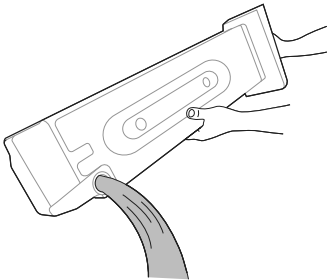
NOTE

- If the water collection tank is full, the  icon glows and a chime will sound while the appliance is operating. If this should occur, the water collection tank needs to be emptied within the next 30 minutes.
- When the condensed water is drained out directly through the optional drain hose, there is no need to empty the water collection tank.

- 1 Pull out the water collection tank.



- 2 Empty the water collection tank into the sink.



CAUTION

- Do not drink the condensed water or reuse it. It could lead to health problems for people and animals.

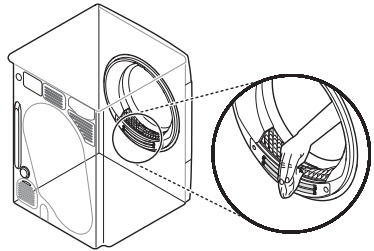
- 3 Refit it back into the appliance.
 - Push in the water collection tank fully into the appliance until it is in place.
- 4 Press the **Start/Pause** button to resume operation.

Cleaning the Appliance Periodically

Wiping the Moisture Sensor

This device senses the moisture level of the clothes during operation, which means it must be cleaned regularly to remove any build-up of lime scale on the surface of the sensor.

Wipe the sensors inside the drum.



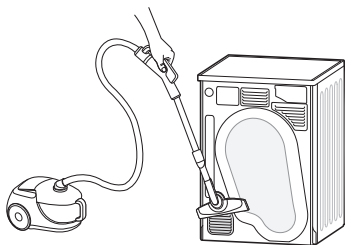
CAUTION

- Do not wipe the moisture sensor with abrasive materials. Always clean the sensor with a dry rough acrylic sponge.

Cleaning the Cool Air Inlet Grill

Vacuum the cool air inlet grill 3 - 4 times a year to make sure there is no build up of lint or dirt that may cause improper air flow. Always unplug the

appliance from the mains power before cleaning or vacuuming.



NOTE

- Warm air is expelled through the ventilation grill.
- Adequate room ventilation should be provided to avoid the contamination of air into the room from units burning other fuels, such as open fires.

Draining the Remaining Condensed Water

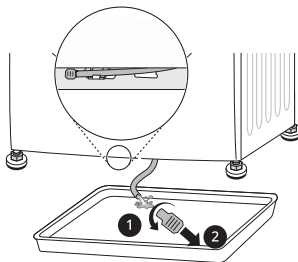
After drying clothes, a small quantity of condensed water may stagnate in the base of the appliance and cause odours. Drain the remaining water regularly to reduce any unpleasant odours from the appliance.

NOTE

- It's better to drain the remaining water when you are going to be away for a long time, because the remaining water will stagnate and cause odours.
- Draining the remaining water before the deodorizing, which works better.
- The remaining water can cause a freezing of the main drain hose(s) and affect the drying performance in cold weather. Draining the remaining water can prevent the appliance from unexpected freezing.

- 1 Run the **Cool Air** programme while 3 minutes then turn off the appliance.

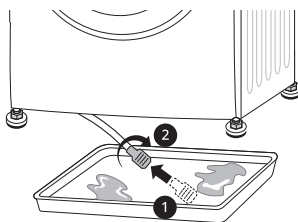
- 2 Unclip the drain tube under the appliance and drain the remaining water.



NOTE

- Use the water collection tank if the optional drain hose is installed or the appliance is stacked on the washing machine.

- 3 Reassemble the plug onto the drain tube and reclip the drain tube into its holder.



⚠ CAUTION

- When the tube is open, it will cause a water leak. Make sure that the plug assembles correctly.

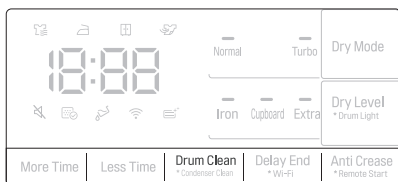
Using Drum Clean feature

With time and use, the appliance may form unpleasant odours that leave your clothes smelling after drying. Using this cleaning function periodically helps to reduce the unpleasant odours from the appliance.

⚠ CAUTION

- Remove all of the clothes from the appliance.

- 1 Pull out the water collection tank, empty the condensed water from it and refit the water collection tank back into the appliance.
- 2 Turn on the appliance.
- 3 Press the **Drum Clean** button.
- 4 Press the **Start/Pause** button.
 - This function operates for about 3 hours.



- 5 Empty the water collection tank after the function has finished.

NOTE

- When the optional drain hose is installed, there is no need to empty the water collection tank.

- 6 Open the dryer's door to provide the appliance with enough air circulation for exhausting any remaining odours.

WARNING

- For safety reasons, do not allow children or animals to enter the appliance. It may cause damage or injury.

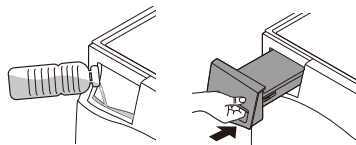
Using Condenser Clean Feature

The appliance washes lint, which builds up onto the surface of the condenser, automatically using water that is condensed from the clothes during operation. However, you can clean the condenser manually if you want to clean it more often.

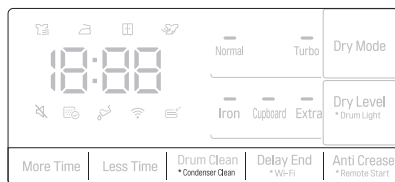
CAUTION

- Remove all of the clothes from the appliance.

- 1 Pull out the water collection tank and empty the water collection tank.
- 2 Pour 1.5 litres of clean water slowly into the entrance of the water collection tank compartment. Then refit the empty water collection tank into the compartment.
 - Do not pour the water quickly as it will spill out.
 - Pouring more than 1.5 liters of water into the compartment will cause water to leak back out.



- 3 Turn on the appliance.
- 4 Press the **Drum Clean** button for 3 seconds.



- 5 Press the **Start/Pause** button to start the cleaning of the condenser.
 - The cleaning of the condenser proceeds for 1 hour.
- 6 Empty the water collection tank after the cleaning is finished.

NOTE

- When the optional drain hose is installed, there is no need to empty the water collection tank.

- 7 Open the dryer's door to provide the appliance with enough air circulation for more thorough drying of the tub after the cleaning has ended.

⚠ WARNING

- For safety reasons, do not allow children or animals to enter the appliance. It may cause damage or injury.

Care in Cold Climates

If the ambient temperature is too low, the condensed water inside the appliance may be frozen and affect the appliance operation. When the condensed water freezes thawing your appliance is necessary by referring to the following instructions.

NOTE

- ⊠E message or ❄ icon appears on the display when the condensed water inside the appliance is frozen.

Thawing out the Accessories

In case of optional drain hose

- Wrapping the optional drain hose with a towel soaked in hot water at 60 °C.

In case of water collection tank

- Immerse the water collection tank in hot water at 60 °C.

Thawing out the Appliance

Running thawing mode

- 1 Turn on the appliance and press the **Less Time** button for 3 seconds.
- When thawing mode is activated, estimated thawing time (3 hours) and ❄ appears on the display.

NOTE

- Only **Less Time** button on the control panel is pressed to activate the thawing mode.
- Only **Power** and **Start/Pause** buttons work when the thawing mode is activated.
- It does not allow you to change the thawing time manually.
- To deactivate the thawing mode, turn off the appliance.

- 2 Press the **Start/Pause** button to start the thawing mode.

- Actual thawing time varies depending on the installation environment such as installation location and ambient temperatures of the appliance.
- A chime sounds and ❄ is turned off after the thawing is done.

- 3 Dry the clothes as usual.

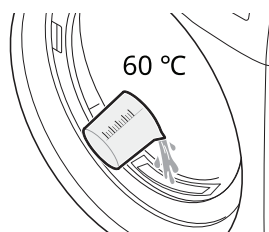
Thawing out the appliance manually

- 1 Open the dryer's door and pull out both inner and outer filter.

- 2 Pour 1.5 litres of hot water at 60 °C into the lint filter compartment and then reinsert the both lint filters.

⚠ CAUTION

- Pouring more than 1.5 liters of water into the compartment will cause water to leak back out.
- Pouring hot water over 60 °C will cause malfunctions to the appliance or burn.



- 3** Turn on the appliance and operate the **Cotton** programme about 30 seconds. Then wait about 30 minutes.

- 4** Operate the **Cotton** programme again. Check if the **FE** message will appear or **ف** will light up within 10 minutes after operating the appliance.
 - When the **FE** message or **ف** icon appears go to step 2 and repeat procedure.
 - Nothing appears on the display when the thawing is done.

- 5** Dry the clothes as usual.

TROUBLESHOOTING

Operation of your appliance can lead to errors and malfunctions. The following tables contain possible causes and notes for resolving an error message or malfunction. It is recommended to read the tables carefully below in order to save your time and money that may cost for calling to LG Electronics service centre.

Before Calling for Service

Your appliance is equipped with an automatic error-monitoring system to detect and diagnose problems at an early stage. If the appliance does not function properly or does not function at all, check the following tables before calling to LG Electronics service centre.

Error Messages

Symptoms	Possible Cause & Solution
dE DOOR ERROR	<p>The door has been opened while the appliance is in operation or the appliance is being operated without the door being closed properly.</p> <ul style="list-style-type: none"> • Close the door completely. • If dE is not released, call for service.
dE4 DOOR ERROR	<p>Door switch detection is not working properly.</p> <ul style="list-style-type: none"> • Unplug the power plug and call for service.
EE1 EE2 TEMPERATURE ERROR	<p>Temperature Sensor has malfunctioned.</p> <ul style="list-style-type: none"> • Unplug the power plug and call for service.
F1 TEMPERATURE ERROR	<p>The temperature inside the drum has risen suddenly.</p> <ul style="list-style-type: none"> • Unplug the power plug and call for service.
LE1 MOTOR LOCKED ERROR	<p>The tub drive has stopped suddenly.</p> <ul style="list-style-type: none"> • Check if the amount of clothes exceeds the maximum load capacity. • Unplug the power plug and call for service.
LE2 RE COMPRESSOR ERROR	<p>The compressor has stopped suddenly.</p> <ul style="list-style-type: none"> • Unplug the power plug and call for service.
DE DRAIN PUMP ERROR	<p>The drain pump motor has malfunctioned.</p> <ul style="list-style-type: none"> • Unplug the power plug and call for service. <p>The surrounding temperature for installation is below zero.</p> <ul style="list-style-type: none"> • The recommended surrounding temperature for installation is 5 - 35 °C.

Operation

Symptoms	Possible Cause & Solution
Appliance will not turn on.	Power cord is not properly plugged in. <ul style="list-style-type: none"> Make sure that the power plug is securely plugged into a grounded outlet matching the appliance's rating plate.
	House fuse is blown, circuit breaker has tripped, or power outage has occurred. <ul style="list-style-type: none"> Reset circuit breaker or replace fuse. Do not increase fuse capacity. If the problem is a circuit overload, have it corrected by a qualified electrician.
Appliance does not heat.	House fuse is blown, circuit breaker has tripped, or power outage has occurred. <ul style="list-style-type: none"> Reset circuit breaker or replace fuse. Do not increase fuse capacity. If the problem is a circuit overload, have it corrected by a qualified electrician.
Water leaks.	The water collection tank hose or the optional drain hose is not connected correctly. <ul style="list-style-type: none"> Connect the water collection tank hose or the optional drain hose correctly.
	The door is closed while clothes or foreign substance is caught in the door. <ul style="list-style-type: none"> Check if clothes or foreign substance is caught in the door before using the appliance. If water leaks continuously, contact the LG Electronics Customer Information Centre.

Performance

Symptoms	Possible Cause & Solution
Greasy or dirty spots are left on clothes.	Fabric softener is used incorrectly. <ul style="list-style-type: none"> When washing clothes that are to be dried in the appliance, use the correct amount of fabric softener as recommended by the manufacturer of the fabric softener.
	Clean and dirty clothes are being dried together. <ul style="list-style-type: none"> Use the appliance to dry only clean items. Soil from dirty clothes can transfer to the clean clothes in the same or later loads.
	Clothes were not properly cleaned or rinsed before being placed in the appliance. <ul style="list-style-type: none"> Stains on dried clothes could be stains that were not removed during the washing process. Make sure that clothes are being completely cleaned or rinsed according to the instructions for your washing machine and detergent. Some difficult soils may require pre-treating prior to washing.

Symptoms	Possible Cause & Solution
Clothes take too long to dry.	Load is not properly sorted. <ul style="list-style-type: none"> Separate heavy items from lightweight items. Larger and heavier items take longer to dry. Light items in a load with heavy items can fool the sensor because the light items dry faster.
	Large load of heavy fabrics. <ul style="list-style-type: none"> Heavy fabrics take longer to dry because they tend to retain more moisture. To help reduce and maintain more consistent drying times for large and heavy fabrics, separate these items into smaller loads of a consistent size.
	Appliance controls are not set properly. <ul style="list-style-type: none"> Use the appropriate control settings for the type of load you are drying. Some loads may require an adjustment of the dry level setting for proper drying.
	Lint filter needs to be cleaned. <ul style="list-style-type: none"> Remove the lint from the lint filter after every cycle. With the lint removed, hold the lint filter up to a light to see if it is dirty or clogged. With some loads that produce high amounts of lint, such as new bath towels, it may be necessary to pause the cycle and clean the filter during the cycle.
	House fuse is blown, circuit breaker has tripped, or power outage has occurred. <ul style="list-style-type: none"> Reset circuit breaker or replace fuse. Do not increase fuse capacity. If the problem is a circuit overload, have it corrected by a qualified electrician.
	Appliance is overloaded. <ul style="list-style-type: none"> Divide extra large loads into smaller loads for better drying performance and efficiency.
	Appliance is underloaded. <ul style="list-style-type: none"> If you are drying a very small load, add a few extra items to ensure proper tumbling action. If the load is very small and you are using Sensor Dry programmes, the electronic control cannot properly sense the dryness of the load and may shut off too soon. Use Manual Drying programmes or add some extra wet clothes to the load.
Drying time is not consistent.	Heat settings, load size, or dampness of clothing is not consistent. <ul style="list-style-type: none"> The drying time for a load will vary depending on the type of heat used (electric), the size of the load, the type of fabrics, the wetness of the clothes, and lint filter. Even an unbalanced load in the appliance can cause poor spinning, resulting in wetter clothes which will take longer to dry.
Clothes are wrinkled.	Clothes have dried too long (overdried). <ul style="list-style-type: none"> Over drying a load of clothes can lead to wrinkled clothes. Try a shorter drying time.
	Clothes have been left in the appliance for too long after cycle ends. <ul style="list-style-type: none"> Use the Anti Crease option.

Symptoms	Possible Cause & Solution
Clothes are shrinking.	<p>Garment care instructions are not being followed.</p> <ul style="list-style-type: none"> To avoid shrinking your clothes, always consult and follow fabric care instructions. Some fabrics will naturally shrink when washed. Other fabrics can be washed but will shrink when dried in the appliance. Use a low or no heat setting.
Lint is left on clothes.	<p>Lint filter has not been cleaned properly.</p> <ul style="list-style-type: none"> Remove the lint from the lint filter after every cycle. With the lint removed, hold the lint filter up to a light to see if it is dirty or clogged. If it looks dirty, follow the cleaning instructions. With some loads that produce high amounts of lint, it may be necessary to clean the lint filter during the cycle.
	<p>Clothes have not been sorted properly.</p> <ul style="list-style-type: none"> Some fabrics are lint producers (i.e., a fuzzy white cotton towel) and should be dried separately from clothes that are lint trappers (i.e., a pair of black linen pants).
	<p>Appliance is overloaded.</p> <ul style="list-style-type: none"> Divide extra large loads into smaller loads for drying.
	<p>Tissue, paper, etc., has been left in pockets.</p> <ul style="list-style-type: none"> Check pockets thoroughly before drying clothes.
Excess static in clothes after drying.	<p>Clothes have dried for too long (overdried).</p> <ul style="list-style-type: none"> Overdrying a load of clothes can cause a buildup of static electricity. Adjust settings and use a shorter drying time, or use Sensor Dry programmes.
	<p>Drying synthetics, permanent press, or synthetic blends.</p> <ul style="list-style-type: none"> These fabrics are naturally more prone to static buildup. Try using fabric softener, or use shorter Manual Drying time settings.
Clothes have damp spots after a Sensor Dry programme.	<p>Very large load or very small load. Single large item such as a blanket or comforter.</p> <ul style="list-style-type: none"> If items are too tightly packed or too sparse the sensor may have trouble reading the dryness level of the load. Use a Manual Drying programme for very small loads. Large, bulky items such as blankets or comforters can sometimes wrap themselves into a tight ball of fabric. The outside layers will dry and register on the sensors, while the inner core remains damp. When drying a single bulky item, it may help to pause the cycle once or twice and rearrange the item to unwrap and expose any damp areas. To dry a few remaining damp items from a very large load or a few damp spots on a large item after a Sensor Dry programme has completed, empty the lint filter, then set a Manual Drying programme to finish drying the item(s).

Odours

Symptoms	Possible Cause & Solution
<p>The appliance has an odour.</p>	<p>Are you using the appliance for the first time?</p> <ul style="list-style-type: none"> • The smell is caused by rubber material that is attached to the appliance inside. This kind of smell is a rubber's own smell and disappears automatically after using the appliance several times.
	<p>Do you smell an odour during use?</p> <ul style="list-style-type: none"> • When washing the clothes, use the detergent in accordance with the manufacturers recommendations. If you use the detergent excessively not according to the recommendations, undissolved detergent may accumulate on the clothes and cause an odour. • You can smell odours from the clothes if the clothes were left in the appliance after drying or in the washing machine after washing. Unload the clothes promptly at the end of the drying or washing cycle. • Ensure you can smell same odour in the washing machine. If so, clean the tub of the washing machine referring to the washing machine user manual. • Always take care of both lint filters clean. If any residues were left in the lint filter after drying, it may cause odours. And also dry the lint filter completely after cleaning. • Deodorization and cleaning the condenser should be done periodically by referring to the MAINTENANCE section.

Wi-Fi

Symptoms	Possible Cause & Solution
Your home appliance and smartphone is not connected to the Wi-Fi network.	The password for the Wi-Fi that you are trying to connect to is incorrect. <ul style="list-style-type: none"> Find the Wi-Fi network connected to your smartphone and remove it, then register your appliance on LG ThinQ.
	Mobile data for your smartphone is turned on. <ul style="list-style-type: none"> Turn off the Mobile data of your smartphone and register the appliance using the Wi-Fi network.
	The wireless network name (SSID) is set incorrectly. <ul style="list-style-type: none"> The wireless network name (SSID) should be a combination of English letters and numbers. (Do not use special characters.)
	The router frequency is not 2.4 GHz. <ul style="list-style-type: none"> Only a 2.4 GHz router frequency is supported. Set the wireless router to 2.4 GHz and connect the appliance to the wireless router. To check the router frequency, check with your Internet service provider or the router manufacturer.
	The distance between the appliance and the router is too far. <ul style="list-style-type: none"> If the distance between the appliance and the router is too far, the signal may be weak and the connection may not be configured correctly. Move the location of the router so that it is closer to the appliance.

