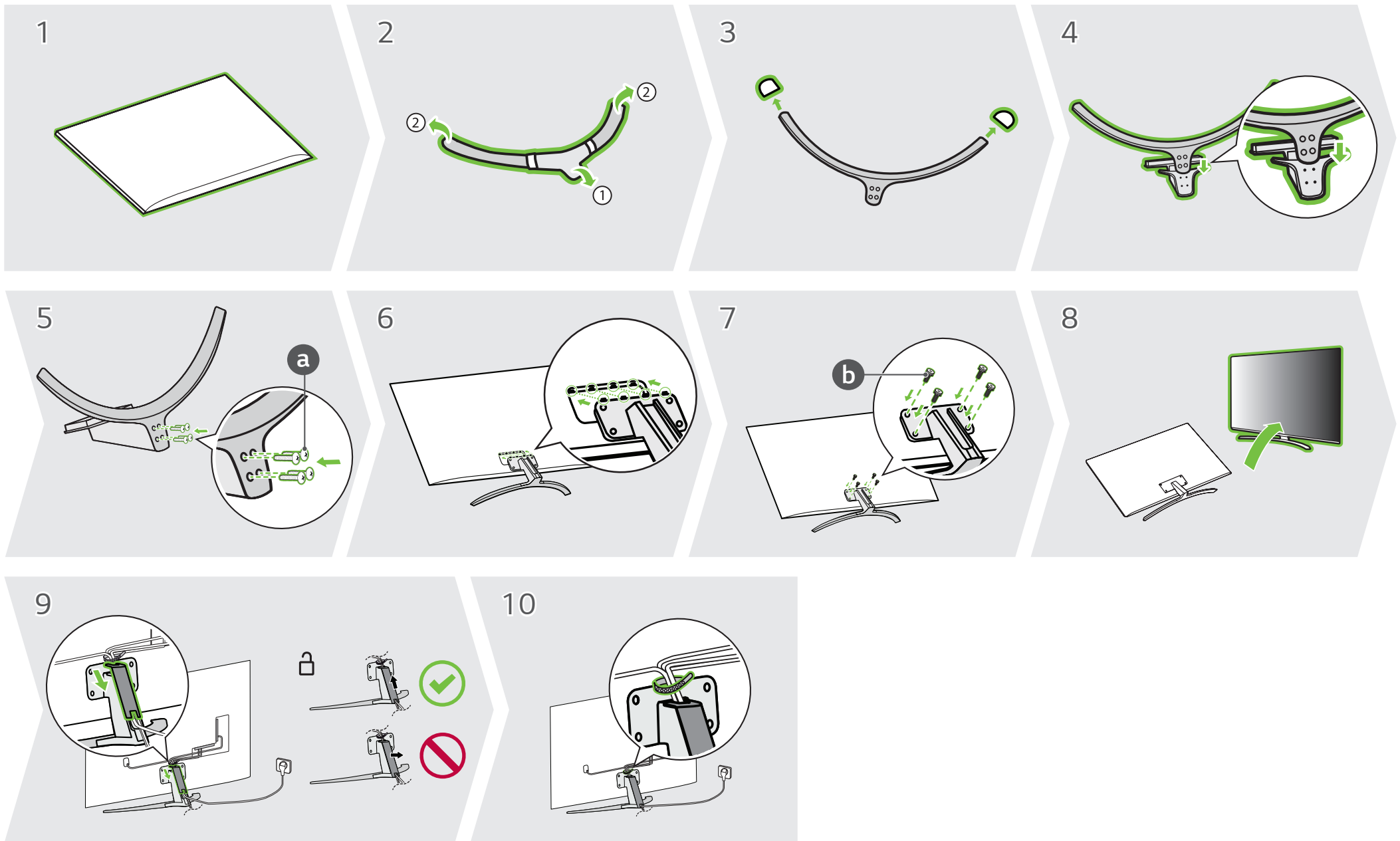
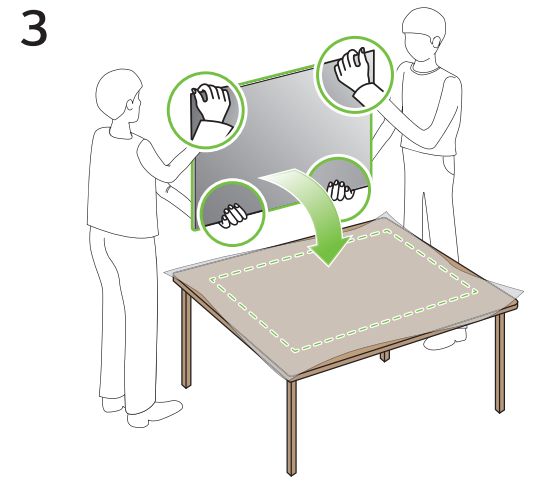
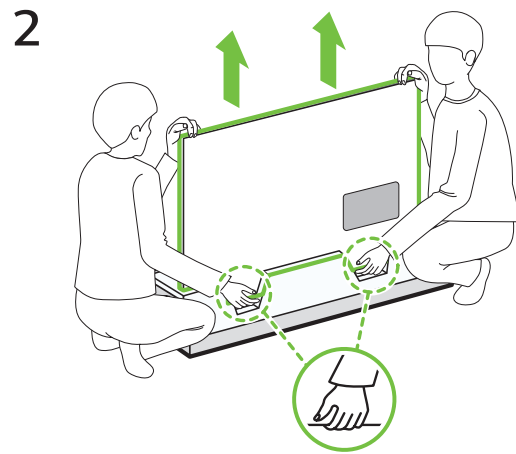
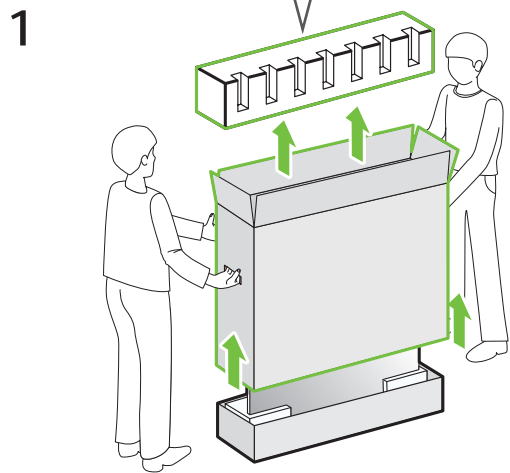
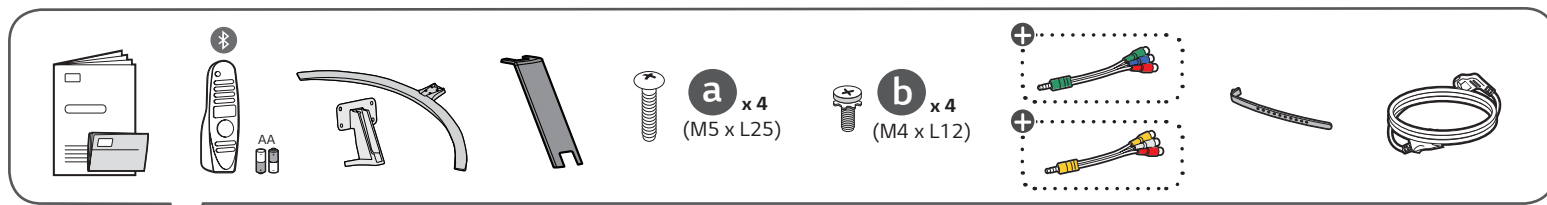
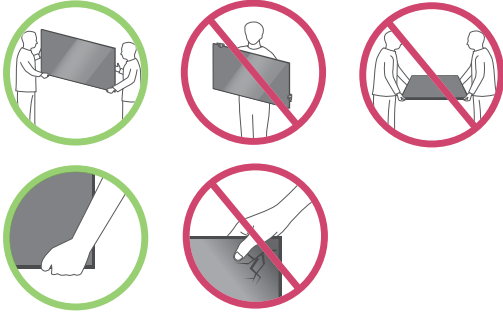
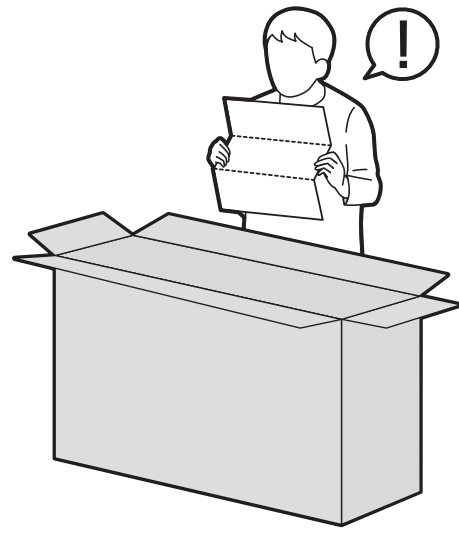
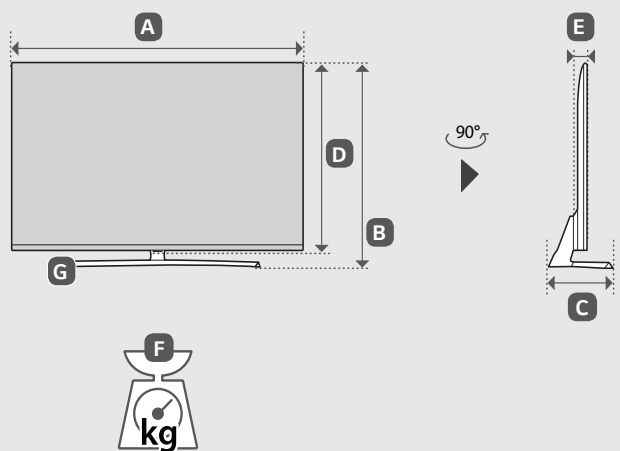
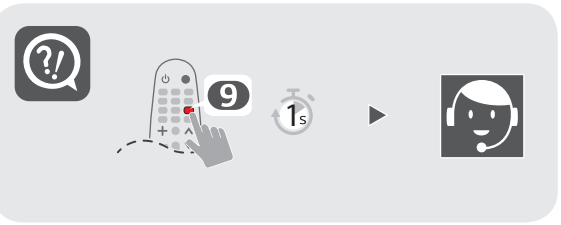
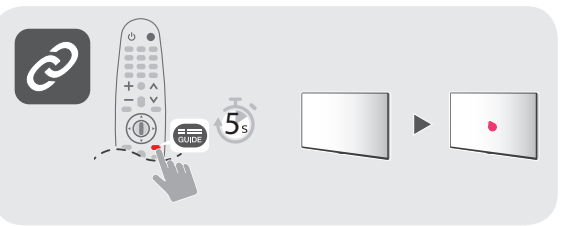
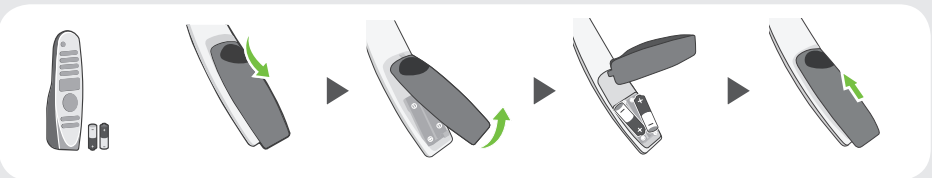
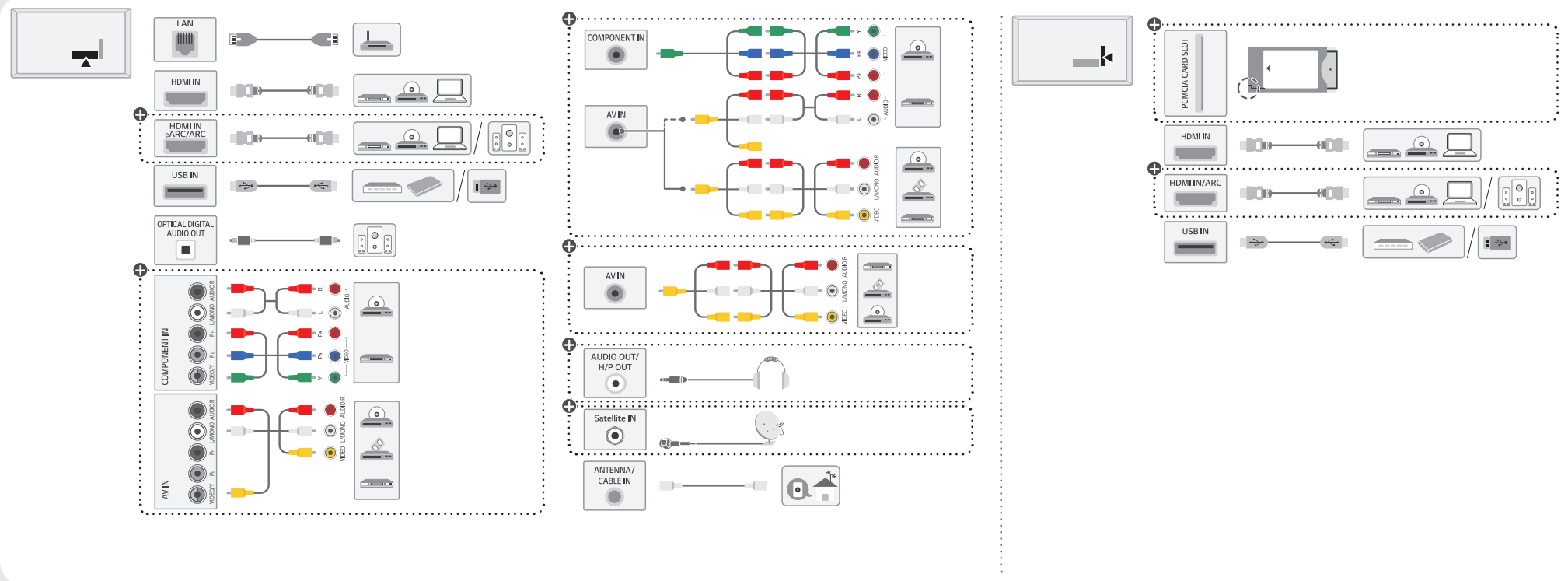


NANO81*
NANO86*





	A	B	C	D	E	F	F-G	
	(mm)				(kg)			
65NANO81TNA 65NANO86TNA 65NANO86VNA	1451	910	324	840	64	25.8	24.1	
Power requirement / متطلبات الطاقة / Alimentation / Requisito de alimentação / แรงดันและความถี่ไฟฟ้า / Nguồn điện yêu cầu	AC 100-240 V - 50 / 60 Hz						تيار متردد 240-100 فولت ~ 60 / 50 هرتز	



- English**
- Read **Safety and Reference**.
 - The Analog Gender adapter can be purchased separately at Customer Service.
- العربية**
- قراءة الأمان والمرجع.
 - يمكن شراء النوع التناظري بشكل منفصل من دعم عملاء LG.
- Français**
- Lire le document **Sécurité et référence**.
 - L'adaptateur analogique peut être acheté séparément auprès du SAV.
- Português**
- Consulte o manual **Segurança e referência**.
 - O adaptador analógico pode ser comprado em separado no Serviço de Apoio ao Cliente da LG.
- ภาษาไทย**
- โปรดอ่านคู่มือใช้ความปลอดภัยและการอ้างอิง
 - สายรวมสัญญาณ Component และ AV สามารถซื้อแยกต่างหากได้ที่ศูนย์บริการของบริษัท
- Tiếng Việt**
- Đọc phần **An toàn và Tham khảo**.
 - Đầu chuyển tín hiệu analog có thể mua riêng tại Trung tâm chăm sóc khách hàng của LG.

+ : Depending on model / حسب الطراز / Selon le modèle / Dependendo do modelo / ขึ้นอยู่กับรุ่น / Tùy theo mã sản phẩm